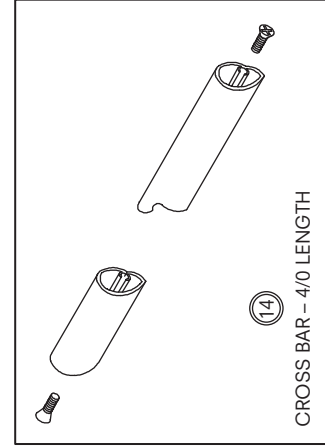
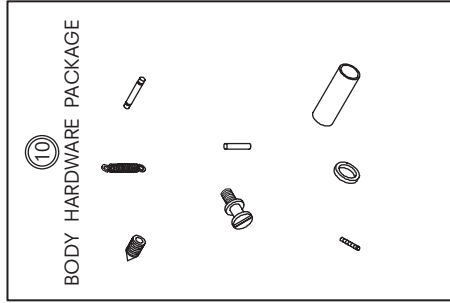
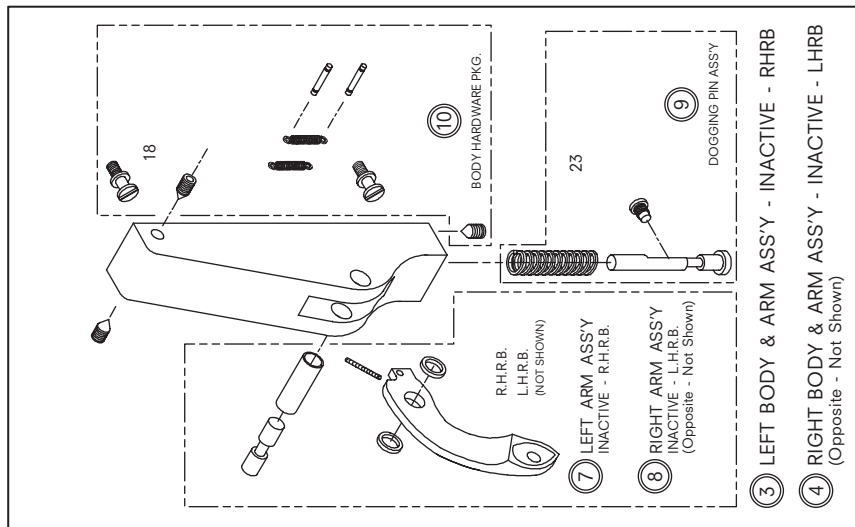
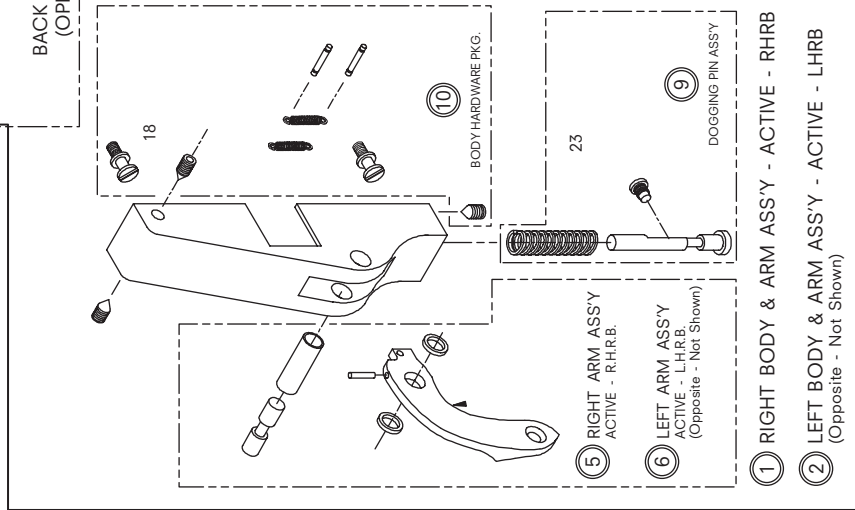
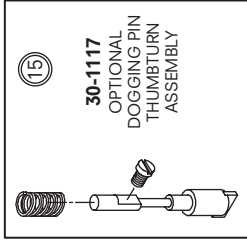
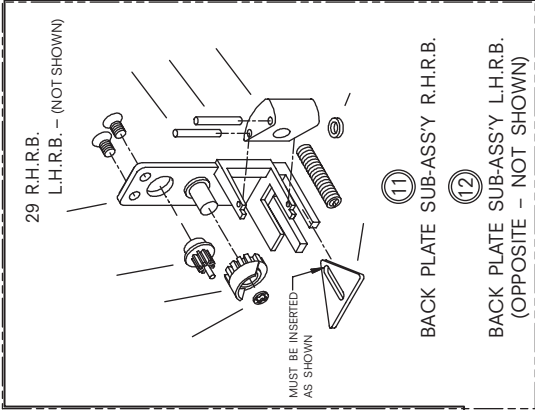
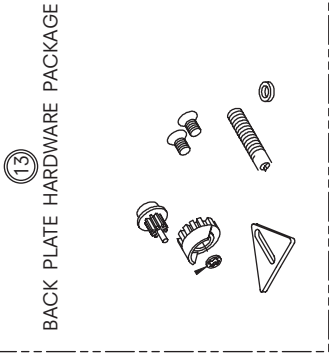
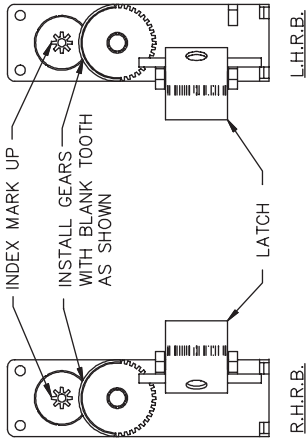


# 1095 RIM EXIT DEVICE

ORIENTATION OF THE BACK PLATE GEAR ASSEMBLY  
FOR R.H.R.B. DOORS



ASSEMBLY NO.	PART NO.	DESCRIPTION	FINISH
1	30-988	RIGHT BODY & ARM ASSEMBLY - ACTIVE - RHRB	US28 / 628 DBZ 313 BLK 335
2	30-989	LEFT BODY & ARM ASSEMBLY - ACTIVE - LHRB	US28 / 628 DBZ 313 BLK 335
3	30-990	LEFT BODY & ARM ASSEMBLY - INACTIVE - RHRB	US28 / 628 DBZ 313 BLK 335
4	30-991	RIGHT BODY & ARM ASSEMBLY - INACTIVE - LHRB	US28 / 628 DBZ 313 BLK 335
5	30-1247	RIGHT ARM ASSEMBLY - ACTIVE - RHRB	US28 / 628 DBZ 313 BLK 335
6	30-1248	LEFT ARM ASSEMBLY - ACTIVE - LHRB	US28 / 628 DBZ 313 BLK 335
7	30-1242	LEFT ARM ASSEMBLY - INACTIVE - RHRB	US28 / 628 DBZ 313 BLK 335
8	30-1243	RIGHT ARM ASSEMBLY - INACTIVE - LHRB	US28 / 628 DBZ 313 BLK 335
9	30-1115	DOGGING PIN ASSEMBLY	
10	30-851	BODY HARDWARE PACKAGE	
11	30-846	BACK PLATE SUB-ASSEMBLY - RHRB	US28 / 628 DBZ 313 BLK 335
12	30-847	BACK PLATE SUB-ASSEMBLY - LHRB	US28 / 628 DBZ 313 BLK 335
13	30-852	BACK PLATE HARDWARE PACKAGE	
14	30-733-PKG	CROSSBAR ASSEMBLY - 4/0	US28 / 628 DBZ 313 BLK 335
15	30-1117	DOGGING PIN ASSEMBLY - THUMBTURN (Optional)	US28 / 628 DBZ 313 BLK 335