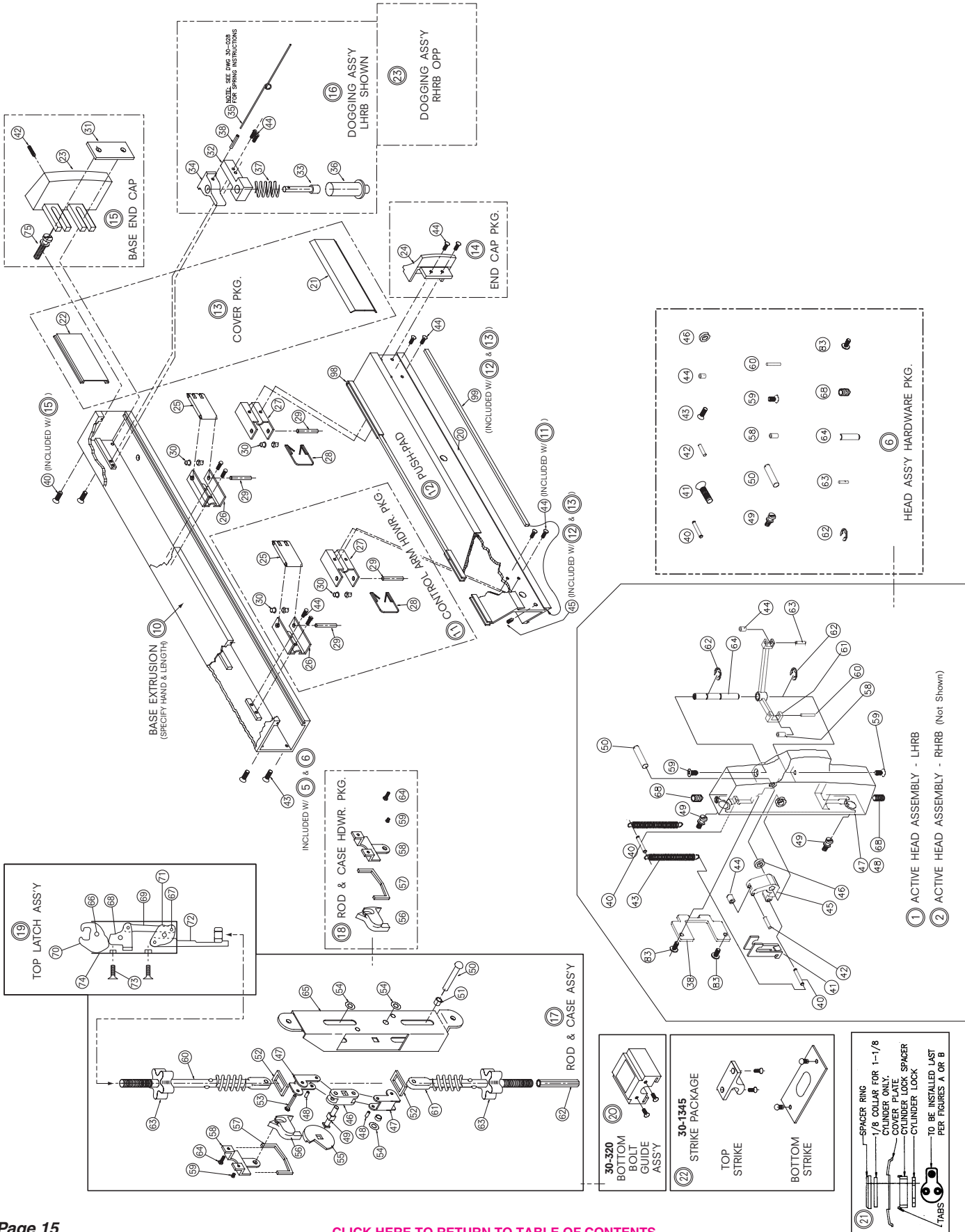


# 2085 CONCEALED VERTICAL ROD - Top Latch

(Manufactured AFTER October 1, 1999)



ASSEMBLY NO.	PART NO.	DESCRIPTION	FINISH
1	30-2617	COMPLETE ACTIVE HEAD ASSEMBLY - LHRB	US28 / 628 DBZ 313
2	30-2619	COMPLETE ACTIVE HEAD ASSEMBLY - RHRB	US28 / 628 DBZ 313
6	30-2607	HEAD ASSEMBLY HARDWARE PACKAGE	
11	30-1064	CONTROL ARM HARDWARE PACKAGE	
12	30-1048-PKG	PUSH-PAD PACKAGE	US28 / 628 DBZ 313
13	30-1063	COVER PLATE PACKAGE	US28 / 628 DBZ 313
14	30-1265	PUSH-PAD END CAP PACKAGE	US28 / 628 DBZ 313
15	30-1266	BASE END CAP PACKAGE	US28 / 628 DBZ 313
16	30-2467	DOGGING ASSEMBLY (LHRB) SHOWN	
17	30-1287	ROD & CASE ASSEMBLY - 7/0	
18	30-916	ROD & CASE HARDWARE PACKAGE	
19	30-1311	TOP LATCH ASSEMBLY	
20	30-320	BOTTOM BOLT GUIDE ASSEMBLY	US28 / 628 DBZ 313
21	30-2671	CYLINDER DOGGING KIT PKG.	US28 / 628 DBZ 313
	30-763P	BOTTOM BOLT (62)	
22	30-1345	STRIKE PACKAGE Top & Bottom	US28 / 628 DBZ 313
23	30-2462	DOGGING ASSEMBLY (RHRB) OPP	