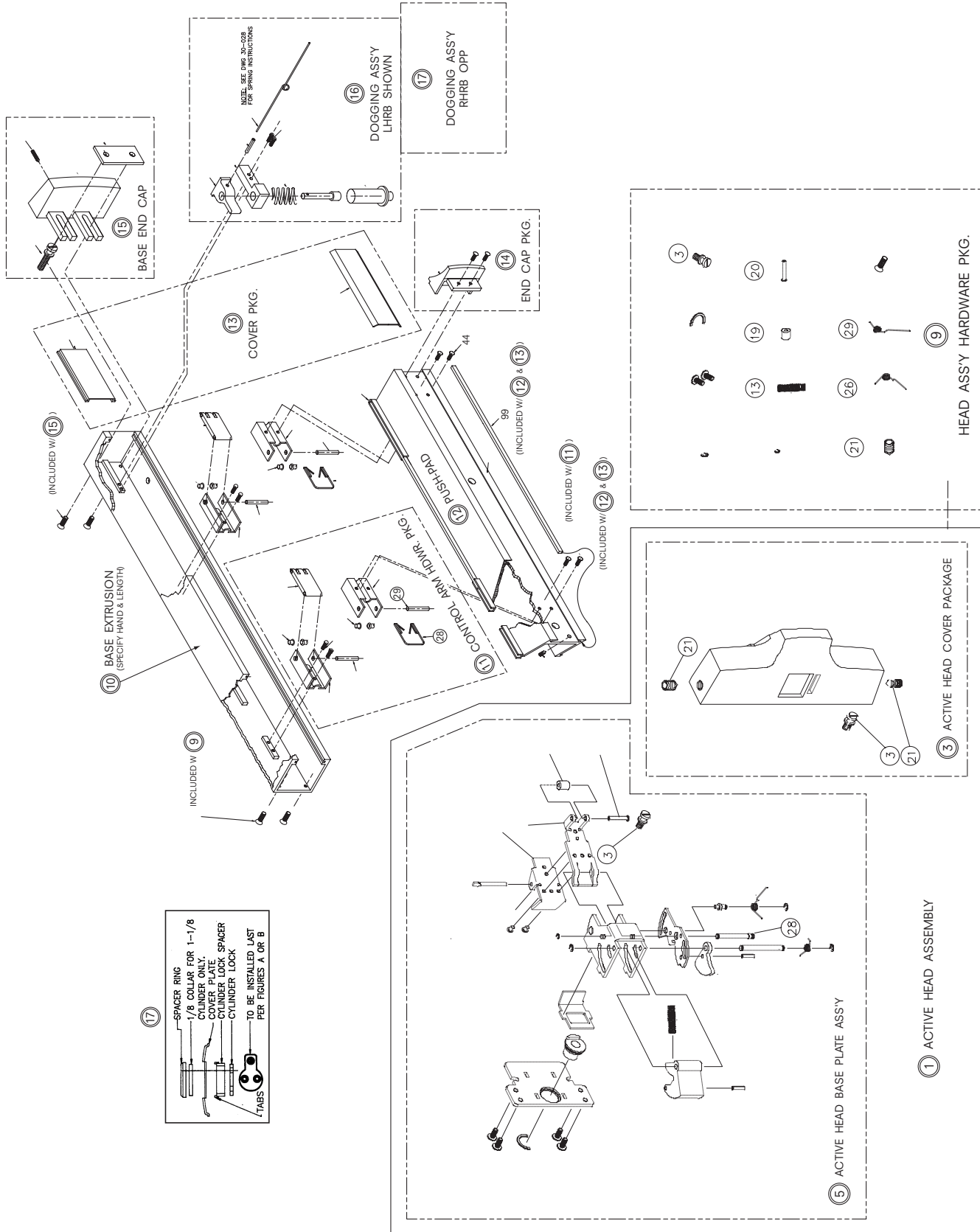




2095 RIM DEVICE

(Manufactured AFTER October 1, 1999)



ASSEMBLY NO.	PART NO.	DESCRIPTION	FINISH
1	30-2622	COMPLETE ACTIVE HEAD ASSEMBLY	US28 / 628 DBZ 313
3	30-2627	ACTIVE HEAD COVER PACKAGE	US28 / 628 DBZ 313
5	30-2635	ACTIVE HEAD BASE PLATE ASSEMBLY	
9	30-2610	HEAD ASSEMBLY HARDWARE PACKAGE	
11	30-1064	CONTROL ARM HARDWARE PACKAGE	
12	30-1048-PKG	PUSH-PAD PACKAGE	US28 / 628 DBZ 313
13	30-1063	COVER PLATE PACKAGE	US28 / 628 DBZ 313
14	30-1265	PUSH-PAD END CAP PACKAGE	US28 / 628 DBZ 313
15	30-1266	BASE END CAP PACKAGE	US28 / 628 DBZ 313
16	30-2467	DOGGING ASSEMBLY (LHRB) SHOWN	
17	30-2462	DOGGING ASSEMBLY (RHRB) OPP.	