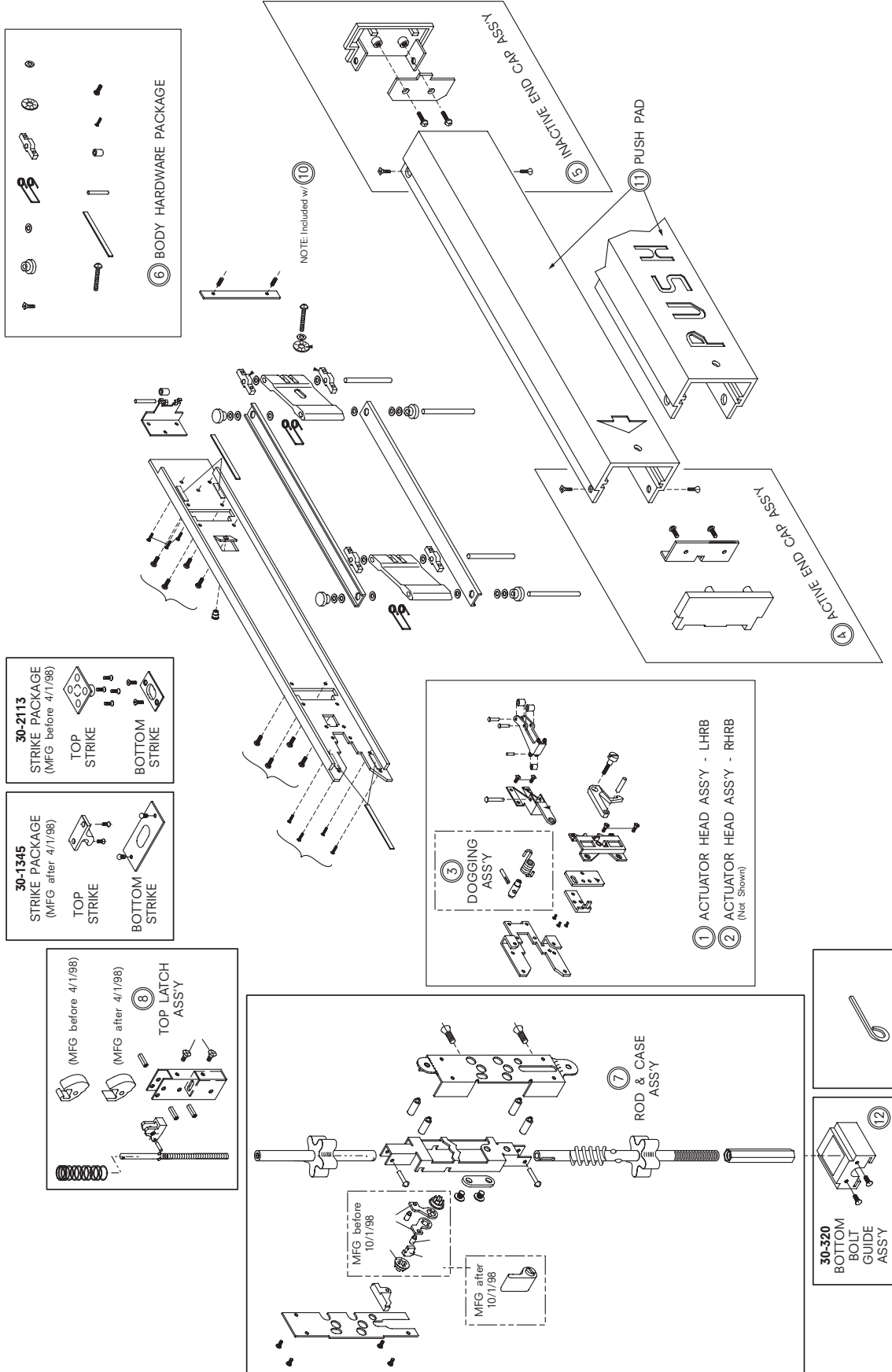


3185 Concealed Vertical Rod with Top latch - Mid Panel Device

(Manufactured AFTER December 1992)



ASSEMBLY NO.	PART NO.	DESCRIPTION	FINISH
1	30-093	ACTUATOR HEAD ASSEMBLY - LHRB	
2	30-094	ACTUATOR HEAD ASSEMBLY - RHRB	
3	30-092	DOGGING ASSEMBLY	
4	30-088	ACTIVE END CAP ASSEMBLY	DBZ / 313 US28 / 628
5	30-086	INACTIVE END CAP ASSEMBLY	DBZ / 313 US28 / 628
6	30-084	BODY HARDWARE PACKAGE	
7	30-2831(L)/30-2827(R)	ROD & CASE ASSEMBLY - Less Top Latch	
8	30-2775	TOP LATCH ASSEMBLY	US28/628-DBZ/313
10	30-095	MOUNTING BRACKET SET	
11	30-023	PUSH PAD - PLAIN - (Non-Handed)	DBZ / 313 US28 / 628
	30-004-1	PUSH PAD - with Arrow - (Non Handed)	DBZ / 313 US28 / 628
	30-004-1L	PUSH PAD - with PUSH - LHRB	DBZ / 313 US28 / 628
	30-004-1R	PUSH PAD - with PUSH - RHRB	DBZ / 313 US28 / 628
12	30-320	BOLT GUIDE ASSEMBLY - Bottom (Adj.)	
	30-2796	DOGGING KEY - 1/8" Hex	(PKG of 2)
	30-2113	Top & Bottom Strike Package (Standard After 4/1/98)	DBZ / 313 US28 / 628
	30-1345	Top & Bottom Strike Package (Standard Before 4/1/98)	DBZ / 313 US28 / 628