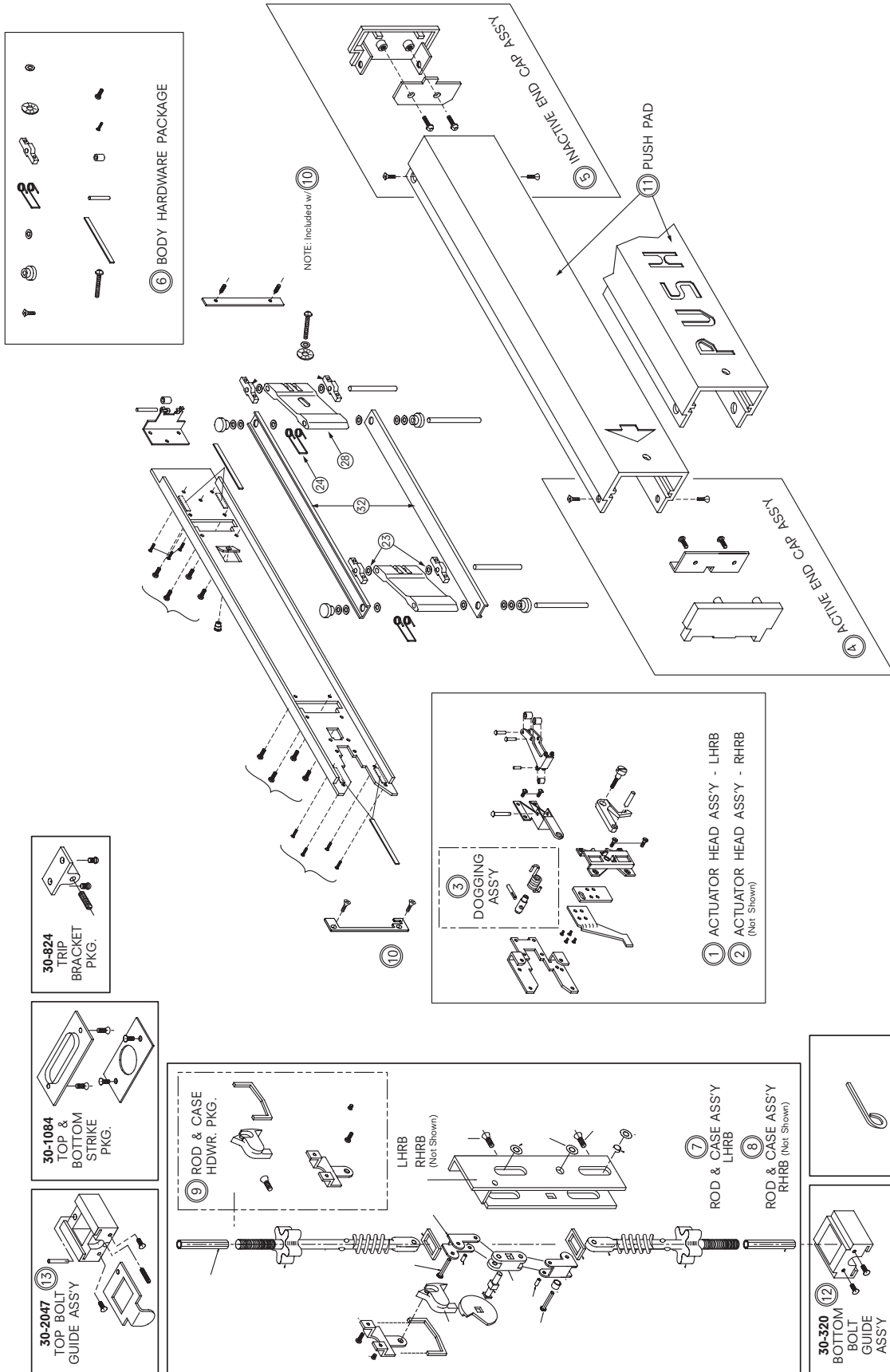


# 3186 Concealed Vertical Rod with Top Bolt - Mid Panel Device



<b>ASSEMBLY</b>			
<b>NO.</b>	<b>PART NO.</b>	<b>DESCRIPTION</b>	<b>FINISH</b>
1	30-093	ACTUATOR HEAD ASSEMBLY - LHRB	
2	30-094	ACTUATOR HEAD ASSEMBLY - RHRB	
3	30-092	DOGGING ASSEMBLY	
4	30-089	ACTIVE END CAP ASSEMBLY	DBZ / 313 US28 / 628
5	30-086	INACTIVE END CAP ASSEMBLY	DBZ / 313 US28 / 628
6	30-085	BODY HARDWARE PACKAGE	
7	30-077	ROD & CASE ASSEMBLY - LHRB - 7/0	
8	30-080	ROD & CASE ASSEMBLY - RHRB - 7/0	
9	30-090	ROD & CASE HARDWARE PACKAGE	
10	30-095	MOUNTING BRACKET SET - LHRB	
	30-096	MOUNTING BRACKET SET - RHRB	
11	30-023	PUSH PAD - PLAIN - (Non-Handed)	DBZ / 313 US28 / 628
	30-004-1	PUSH PAD - with Arrow - (Non Handed)	DBZ / 313 US28 / 628
	30-004-1L	PUSH PAD - with PUSH - LHRB	DBZ / 313 US28 / 628
	30-004-1R	PUSH PAD - with PUSH - RHRB	DBZ / 313 US28 / 628
12	30-320	BOTTOM BOLT GUIDE ASSEMBLY	
13	30-2047	TOP BOLT GUIDE ASSEMBLY (Adj.)	
	30-2796	DOGGING KEY - 1/8" Hex	(PKG of 2)
	30-763P	TOP or BOTTOM BOLT (77)	
	30-842	TRIP BRACKET PACKAGE	US28 / 628 DBZ / 313 BLK 335
	30-1084	STRIKE PACKAGE - Top & Bottom	US28 / 628 DBZ / 313 BLK 335